

Protocol

Impact of Chronic Use of Antimalarials on SARS-CoV-2 Infection in Patients With Immune-Mediated Rheumatic Diseases: Protocol for a Multicentric Observational Cohort Study

Ana Gomides¹, PhD, MD; Gilda Ferreira², PhD; Adriana Kakehasi², PhD; Marcus Lacerda³, MD, PhD; Cláudia Marques⁴, PhD; Licia Mota⁵, PhD; Eduardo Paiva⁶, PhD; Gecilmara Pileggi⁷, PhD; José Provenza⁸, PhD; Edgard Reis-Neto⁹, PhD; Vanderson Sampaio³, PhD; Ricardo Xavier¹⁰, PhD; Marcelo Pinheiro⁹, PhD

¹University Center of Brasília, Brasília, Brazil

²Federal University of Minas Gerais, Belo Horizonte, Brazil

³Universidade do Estado do Amazonas, Manaus, Brazil

⁴Federal University of Pernambuco, Recife, Brazil

⁵University of Brasília, Brasília, Brazil

⁶Federal University of Parana, Curitiba, Brazil

⁷Faculdade de Ciências da Saúde de Barretos, Barretos, Brazil

⁸Sociedade Brasileira de Reumatologia, São Paulo, Brazil

⁹Federal University of São Paulo, São Paulo, Brazil

¹⁰Federal University of Rio Grande do Sul, Porto Alegre, Brazil

Corresponding Author:

Marcelo Pinheiro, PhD

Federal University of São Paulo

Hospital São Paulo

São Paulo,

Brazil

Phone: 55 6135480162

Email: mpinheiro@uol.com.br

Abstract

Background: COVID-19, caused by the virus SARS-CoV-2, has brought extensive challenges to the scientific community in recent months. Several studies have been undertaken in an attempt to minimize the impact of the disease worldwide. Although new knowledge has been quickly disseminated, including viral mechanisms, pathophysiology, and clinical findings, there is a lack of information on the effective pharmacological management of this disease. In vitro studies have shown some benefits related to the use of antimalarials (chloroquine and hydroxychloroquine) for inhibiting SARS-CoV-2. However, the data from open clinical trials on COVID-19 patients are controversial.

Objective: We present the protocol for a research project that compares the potential protective effect of antimalarials in preventing moderate-to-severe forms of COVID-19 in two groups: (1) patients treated chronically with antimalarials for rheumatic diseases and (2) other members of the patients' household who have not been diagnosed with rheumatic diseases and are not taking antimalarials.

Methods: This is a 24-week, prospective, observational cohort study comprising patients from public and private health services across Brazil, who chronically use antimalarials for the treatment of immune-mediated rheumatic diseases, osteoarthritis, or chikungunya-related arthropathy. A total of six sequential phone interviews were scheduled during the COVID-19 outbreak in five different regions of Brazil. Information regarding social, epidemiological, and demographic data, as well as details about rheumatic diseases, antimalarials, comorbidities, and concomitant medication, is being recorded using a specific online form in the REDCap database. Symptoms suggestive of COVID-19, including fever, cough, dyspnea, anosmia, and dysgeusia, are being self-reported and collected via phone interviews. Our main outcomes are hospitalization, need of intensive care unit, and death.

Results: Recruitment began at the end of March 2020, and the inclusion was done during an 8-week period (from March 29 to May 17) with a total of 10,443 individuals enrolled at baseline, 5166 of whom have rheumatic diseases, from 23 tertiary rheumatology centers across 97 Brazilian cities. Data analysis is scheduled to begin after all inclusion data have been collected.

Conclusions: This study, which includes a large sample of chronic antimalarial users, will allow us to explore whether SARS-CoV-2 infection may be associated with immune-mediated rheumatic diseases and long-term antimalarial usage.

Trial Registration: Brazilian Registry of Clinical Trials RBR-9KTWX6; [http://www.ensaiosclinicos.gov.br/rg/RBR-9ktwx6/](http://www ensaiosclinicos.gov.br/rg/RBR-9ktwx6/)

International Registered Report Identifier (IRRID): DERR1-10.2196/23532

(*JMIR Res Protoc* 2020;9(10):e23532) doi: [10.2196/23532](https://doi.org/10.2196/23532)

KEYWORDS

COVID-19; SARS-CoV-2; coronavirus; antimalarial; rheumatic diseases; mortality; immune system; immunology; protocol; observational; pharmacological; drug

Introduction

COVID-19, which originated from Wuhan, China, in December 2019, remains a major challenge for scientists and the medical community as it continues to spread rapidly across the world [1,2]. The rapid transmission of the disease, which is caused by the novel coronavirus SARS-CoV-2, and the need to minimize its impact have caused scientific research and information to emerge at a record speed, but there are still numerous knowledge gaps [3-6].

In recent months, a marked information revolution has been observed, relating to viral mechanisms, pathophysiology, and heterogeneous clinical findings with different severity grades. Those infected with COVID-19 range from asymptomatic individuals to critically ill patients with outcomes like severe acute respiratory syndrome, coagulopathy (a prothrombotic state triggered by inflammation and other factors), and death [7-13]. Age and concomitant diseases, especially hypertension, diabetes, and heart, kidney, and lung diseases, are associated with poor outcomes [14-18].

Considering there is no specific, effective pharmacological treatment for COVID-19, several drugs have been tested, such as antivirals (lopinavir-ritonavir, remdesivir, favipiravir); antimalarials alone or combined with azithromycin; interleukin 6 (IL-6) antagonists; Janus kinase inhibitors and interferon, as well as other procedures (extracorporeal membrane oxygenation and convalescent plasma). However, to date, there are no data on the potential preventive effect of any of these, regardless of timing (pre-exposure, symptomatic period, or inflammatory phase) [19-27].

The role of chloroquine and hydroxychloroquine in treating patients with malaria and immune-mediated rheumatic diseases (IMRD) is well-known, especially in cases of systemic lupus erythematosus and rheumatoid arthritis. In vitro studies have shown antimalarials have an antiviral effect against some viruses, such as SARS-CoV (severe acute respiratory syndrome-associated coronavirus), MERS-CoV (Middle East respiratory syndrome coronavirus), SARS-CoV-2, HIV, Zika, and influenza A(H5N1), especially in relation to endosomal membrane pH changes and an inhibitory mechanism to hamper the viral entry inside the cells. However, clinical trials are controversial and present many methodological problems, including randomization, dosage, time of use, endpoint definitions, outcomes, and safety issues [28-35].

Among rheumatologists, antimalarials have been used safely and effectively for several decades in patients with rheumatic diseases [36]. For this reason, rheumatologists and rheumatic patients who are long-term users of antimalarials were involved in COVID-19-related discussions and research [37-39]. Our main hypothesis is that patients with rheumatic diseases who chronically use antimalarials could have a lower rate of moderate-to-severe forms of COVID-19 since these drugs work as immune modulators in mitigating cytokine storm and poor prognosis.

Objectives

Our primary aim is to assess the potential preventive effects of antimalarials in reducing the incidence of moderate-to-severe forms of COVID-19 in patients with rheumatic diseases. Secondly, we aim to determine the frequency of SARS-CoV-2 infection in patients with rheumatic diseases who are chronic users of antimalarials. For both objectives, patients with rheumatic diseases will be compared with members of their household who are not taking antimalarials.

Methods

Design

The study design will be a prospective, multicentric, observational cohort study with a control group.

Sample Size

Considering a moderate-to-severe COVID-19 rate as the dependent variable, a rate which the current literature estimates to be 20% [4,6,10-18,40-42] as well as the proportion of 1 case for every 2 controls, the sample calculation was approximately 3000 antimalarial users and 6000 nonusers, with an error $\alpha=5\%$ and $\beta=20\%$.

Inclusion Criteria

The inclusion criteria are as follows:

- Men and women;
- >18 years of age;
- Use of antimalarials for at least 30 days before inclusion in the study;
- Diagnosis of IMRD (according to the criteria of the American College of Rheumatology or European League Against Rheumatism), rheumatoid arthritis [43], systemic lupus erythematosus [44], Sjögren's syndrome [45], systemic sclerosis [46], inflammatory myopathies [47], and mixed connective tissue disease [48];

- Diagnosis of osteoarthritis (subgroup) [49];
- Diagnosis of chikungunya-related arthropathy (subgroup).

Exclusion Criteria

The exclusion criteria, which apply to both patients and controls, are as follows:

- Previous use of chloroquine or equivalent that was not in the past 6 months;
- History of solid organ or bone marrow transplantation;
- Neoplasm of solid organs or lymphatic or myeloproliferative lineage in the past 12 months with or without adjuvant chemotherapy;
- Positive HIV status, regardless of highly active antiretroviral therapy;
- Use of intravenous human immunoglobulin in the past 30 days;
- End-stage renal disease on peritoneal dialysis and hemodialysis.

Control Group

The control group will consist of healthy individuals aged >18 years, who are household cohabitants or work colleagues of patients with rheumatic diseases in the intervention group.

Contact with a suspected or confirmed case of COVID-19 is defined as an individual sharing accommodations with a patient with a rheumatic disease (eg, residing in the same house or environment as roommates, occupational colleagues, etc). The exposure grade assessment is individualized, considering the type of environment and the exposure time.

For each case, two household and/or professional contact individuals will be selected as controls. The choice of the first control is prioritized by flu-like symptoms and defined as the

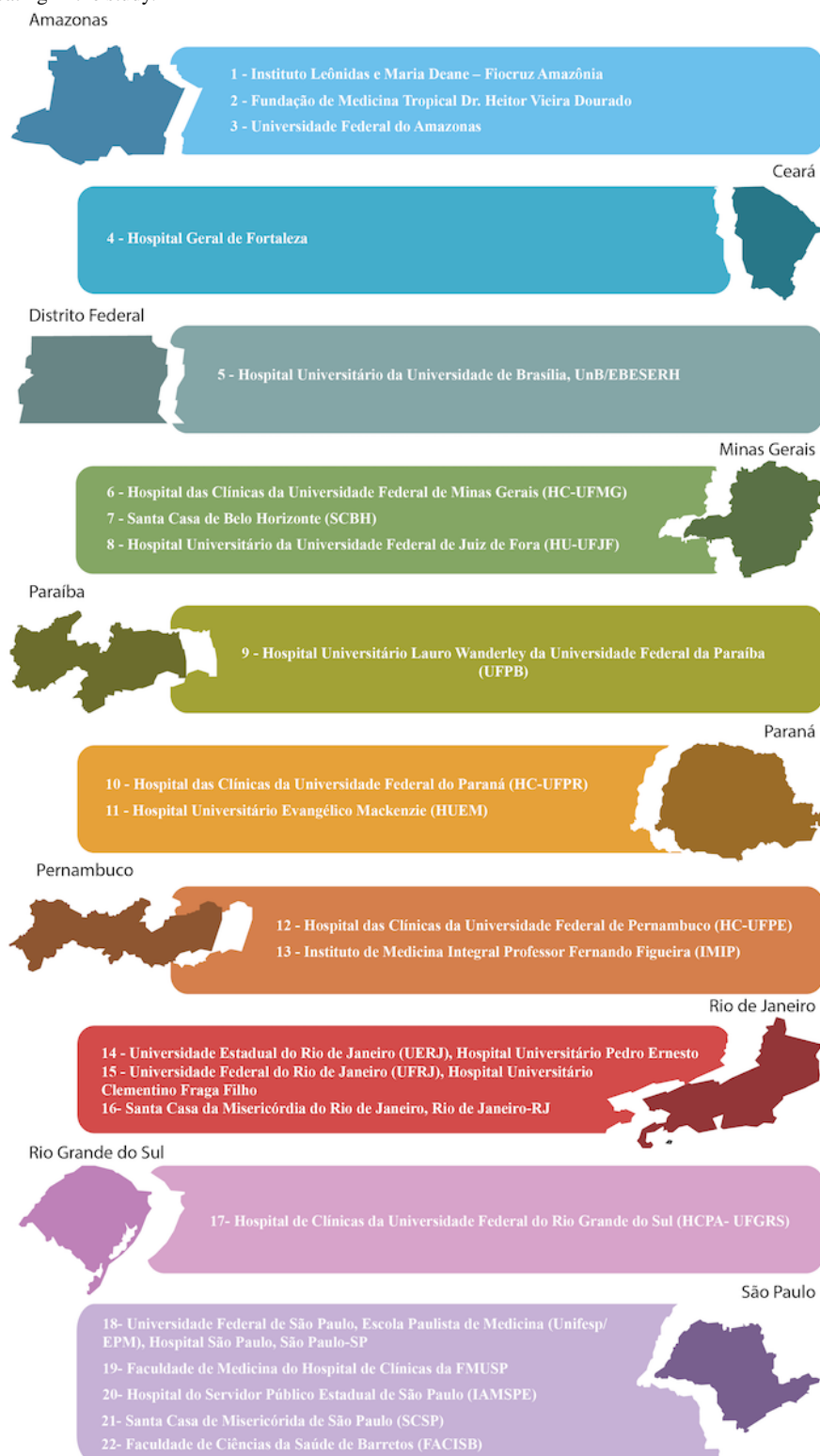
“symptomatic group,” including suspected or confirmed cases. Those without symptoms will comprise the “asymptomatic group;” both household and/or contact individuals can be selected, preferably paired for age and sex.

The household and/or workplace contacts were chosen to characterize the control group because of their high epidemiological value during community viral transmissions worldwide, instead of including nonusers of antimalarials with rheumatic diseases. Moreover, lupus patients without antimalarial treatment are quite uncommon, except in those with previous toxicity (maculopathy, allergy, long-term remission, etc).

Data Collection

Data are being collected regarding social, epidemiological, and demographic characteristics, as well as detailed information on antimalarials (type of salt, dosage, frequency, adherence during the pandemic) and rheumatic disease (diagnosis, disease activity). In addition, aspects related to comorbidities, smoking, alcohol intake, and concomitant medications are being recorded, as well as specific information about COVID-19 symptoms and main outcomes (hospitalization, need for intensive care unit, and death) in both groups ([Multimedia Appendix 1](#)).

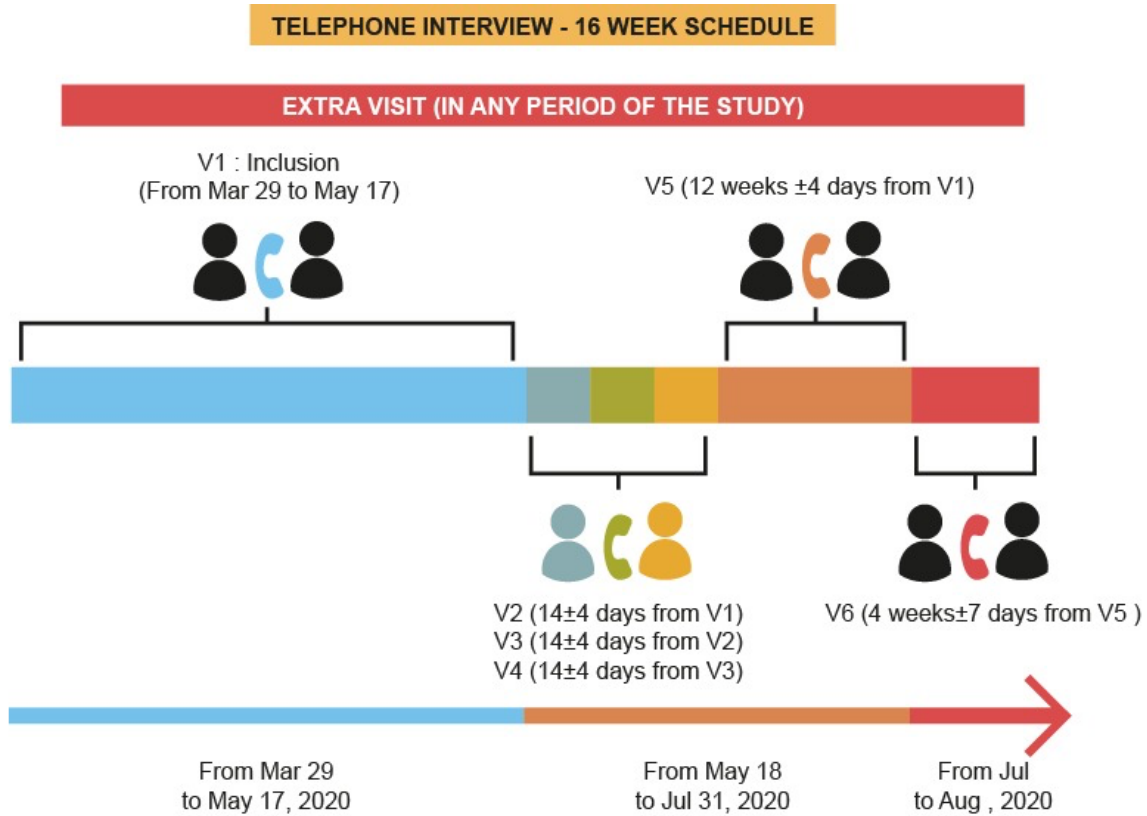
All phone interviews are being conducted by health care professionals (eg, volunteer medical students), all previously trained by the principal investigator or subinvestigator from each rheumatology center ([Figure 1](#)). This training included a tutorial in PDF and video formats about each step of the study protocol. In addition, several WhatsApp-based groups were formed and supervised by the principal investigator, subinvestigator, or study coordinators to find the best solution for minimizing eventual problems.

Figure 1. Centers participating in the study.

All patients and controls gave a verbal informed consent before participating in this cohort study. The need for signed informed consent was waived by the Brazilian National Ethics Committee (CONEP) due to the urgency of the pandemic. However, it is worth emphasizing that participation was voluntary for both groups. Research subjects will not be identified by their full name at any time and will not have their personal data disclosed.

The data are being stored on the REDCap platform, with telephone interviews performed as shown in Figure 2. Interviews with patients with invalid contact information or who did not answer the telephone after three consecutive calls at intervals of 3 days were canceled, although patients were not removed from the study. All patients will be evaluated during the closing visit (V6), unless they decline to participate, regardless of whether intermediary visits were missed (V2 to V5).

Figure 2. Telephone interview schedule.



A clinically confirmed case of COVID-19 was defined according to the Brazilian Ministry of Health criteria [50] that included self-reported symptoms (fever, cough, nasal congestion, shortness of breath, malaise, myalgia, decline in general condition, and sudden anosmia and/or dysgeusia) and/or have been in contact with someone with a confirmed or suspected

case of COVID-19. A positive PCR (polymerase chain reaction) test for SARS-CoV-2, via oropharyngeal and nasopharyngeal sampling or a specific confirmatory serology (immunoglobulin G and/or immunoglobulin M), is needed to test for infection, according to the Brazilian Ministry of Health [50] (Figure 3).

Figure 3. Suspected vs confirmed cases of COVID-19. RT-PCR: real-time polymerase chain reaction, IgM: immunoglobulin M, IgA: immunoglobulin A, IgG: immunoglobulin G, ELISA: enzyme-linked immunosorbent assay, IC: ion channel, ECLIA: electrochemiluminescence immunoassay.

SUSPECTED CASE	<ol style="list-style-type: none"> 1. Flu syndrome (FS): Patient with acute respiratory symptoms, including 2 of following, at least: fever (self-reported or measured), chills, sore throat, headache, cough, rhinorrhea, anosmia or dysgeusia) 2. Severe Acute Respiratory Syndrome (SARS): Patient with FS AND shortness of breath OR persistent thoracic pressure OR hypoxemia (oxygen saturation below 95% in ambient air) OR cyanosis.
CONFIRMED CASE	<ol style="list-style-type: none"> 1. Clinical criteria definition: Patient with FS OR SARS PLUS anosmia OR dysgeusia (acute and no prior cause or previous episode) 2. Epidemiological criterion: Patient with FS OR SARS PLUS confirmed close contact or household cohabitant with COVID-19 in the last 14 days before beginning the symptoms 3. Lab criterion: Patient with FS OR SARS PLUS positive confirmatory test for SARS-CoV-2 by RT-PCR OR Reagent serology for IgM, IgA and/or IgG by ELISA, IC or ECLIA

Moderate-to-severe cases are defined as those that require hospitalization, mechanical ventilation, or result in death. Through direct contact with hospitals, hospitalized patients are being clinically evaluated in terms of longitudinal follow-up and treatment outcome, infection severity, length of stay, need for intensive care, mechanical ventilation, and cause of death.

Considering the heterogeneous community viral transmission in Brazil, some epidemiological approaches were developed to assure a similar path involving patients with rheumatic diseases and controls, such as the same pandemic COVID-19 curve in each city and region [41]. Therefore, after initial contact (V1), two strategies were adopted to maintain the follow-up of patients and to optimize the capture of main outcomes. Firstly, an active strategy is addressed in cases of flu-like syndrome and symptoms suggestive of COVID-19. For this strategy, the patient or household member is shown how to provide clinical data on the patient or his/her control through a toll-free telephone number (the 0800 system). Secondly, the patient is contacted every week by the REDCap team to gather relevant data on infection. An additional visit is conducted if the patient or control provides information about flu symptoms or disease activity via an unscheduled phone call or contact through the toll-free number. In both cases the individual will be advised to stay home and use painkillers or an antipyretic. In case of worsening/severe symptoms (eg, persistent cough or fever and shortness of breath), they will be advised to visit a hospital or to make an appointment with a physician involved in our study.

Outcomes

Primary outcomes (at baseline and during the 24-week study period) are as follows:

- SARS-CoV-2 infection (illness): suspected, suggestive, or confirmed
- Death
- Hospitalization
- Need for intensive care unit
- Need for mechanical ventilation
- Total hospitalization time
- Date of occurrence of an adverse event (eg, death, hospitalization)

Secondary outcomes are as follows:

- General clinical differences in COVID-19 course severity between rheumatic patients and nonrheumatic controls;
- Initial clinical differences and progression to moderate or severe course of disease between the two groups.

Confounding and adjustment variables are age, sex, comorbidities, concomitant medications, and flu vaccine.

Ethics

This project was registered with the Brazilian Registry of Clinical Trials (ID RBR-9KTWX6).

The project, which is currently in the data collection phase, was approved by the Brazilian Committee of Ethics in Human Research–CONEP (CAAE 30246120.3.1001.5505).

Statistical Analysis

The data will be analyzed using descriptive statistics—absolute and relative frequencies for categorical variables and quantitative measures (mean, quartiles, minimum, maximum, and standard deviation) for numerical variables. The normality of the data will be verified using the Kolmogorov-Smirnov test.

A chi-square test will be used to assess the association between categorical variables with standardized adjusted residual calculation; Fisher exact test will be used for small samples. The linear associations between two variables of a numerical nature will be evaluated using Pearson correlation.

To evaluate the behavior of clinical variables between two points in time by group, analysis of variance (ANOVA) will be used, with repeated measures. In the case of nonnormality of data, the means of the groups at each time point will be compared using the Kruskal-Wallis nonparametric test. To compare the means between phone visits in each group, the Wilcoxon nonparametric test will be used.

The comparison between the means of numerical variables with normal distribution will be verified through the Student *t* test. If the assumption of normality is violated, the Mann-Whitney nonparametric test will be used.

Adjusted multiple linear regression models will be used to assess the simultaneous effects of sex, age, duration of illness, comorbidities, concomitant medications, and other confounding variables, according to group and predefined outcomes. For dichotomous dependent variables, a logistic regression model will be preferred. Survival analysis models, including log rank and Kaplan-Meier tests, adjusted for confounding variables, will be developed to assess the main outcomes over time. The time defined as the end date will be the date of a major event, such as illness with confirmation or suspicion of infection, hospitalization, or death.

Correlation analysis will be performed using the Pearson test to assess the relationship between the incidence rate of confirmed COVID-19 cases per 100,000 inhabitants and the proportion of symptomatic patients and controls in municipalities. Data of confirmed cases per municipality are available through the Brasil.io project [51]. The QGIGS Desktop 3.6.0 (Open Source Geospatial Foundation) will be used for map plotting.

SPSS, version 20 (IMB Corp) will be used in all analyses, and a *P* value <.05 will be considered significant.

Results

This study is in the data collection phase. Study recruitment opened in March 2020. In an 8-week period (from March 29 to May 17), a total of 10,443 individuals enrolled at baseline (including 5166 patients with rheumatic diseases) from 23 tertiary rheumatology centers in 97 Brazilian cities. Data analysis is scheduled to start after all relevant data have been collected.

Discussion

This study's novel design, with its large sample of chronic antimalarial users, will enable us to perform a thorough prospective assessment (every 2 weeks) to explore whether vulnerability to SARS-CoV-2 infection may be associated with IMRD or to hydroxychloroquine after adjustments for cofounders, especially those related to other immunosuppressive drugs and comorbidities. On the other hand, it has some

limitations, such as compliance and adherence; a potential shortage of HCQ (hydroxychloroquine) in some parts of our country; possible biases associated with recalling symptoms; inability to answer the phone (due to hospitalization or death), and lack of confirmatory tests (PCR tests for SARS-CoV-2 or antibody-based RNA [ribonucleic acid]) for all enrolled patients and controls, especially in those with nonsevere forms. Future randomized controlled trials may provide a better understanding of these differences.

Conflicts of Interest

LM has received personal or institutional support from Abbvie, Janssen, Pfizer and Roche, and has delivered speeches at events related to this work and sponsored by Abbvie, Boehringer Ingelheim, GSK, Janssen, Libbs, Lilly, Novartis, Pfizer, Roche, Sandoz, and UCB. AG has received personal or institutional support from Pfizer and Abbvie.

Multimedia Appendix 1

Data collection form.

[\[PDF File \(Adobe PDF File\), 44 KB-Multimedia Appendix 1\]](#)

References

1. Salata C, Calistri A, Parolin C, Palù G. Coronaviruses: a paradigm of new emerging zoonotic diseases. *Pathog Dis* 2019 Dec 01;77(9):a [FREE Full text] [doi: [10.1093/femspd/ftaa006](https://doi.org/10.1093/femspd/ftaa006)] [Medline: [32065221](https://pubmed.ncbi.nlm.nih.gov/32065221/)]
2. Li X, Wang W, Zhao X, Zai J, Zhao Q, Li Y, et al. Transmission dynamics and evolutionary history of 2019-nCoV. *J Med Virol* 2020 May 14;92(5):501-511 [FREE Full text] [doi: [10.1002/jmv.25701](https://doi.org/10.1002/jmv.25701)] [Medline: [32027035](https://pubmed.ncbi.nlm.nih.gov/32027035/)]
3. Bonini S, Maltese G. COVID-19 Clinical trials: Quality matters more than quantity. *Allergy* 2020 May 20 [FREE Full text] [doi: [10.1111/all.14409](https://doi.org/10.1111/all.14409)] [Medline: [32434272](https://pubmed.ncbi.nlm.nih.gov/32434272/)]
4. Teymoori-Rad M, Samadzadeh S, Tabarraei A, Moradi A, Shahbaz MB, Tahamtan A. Ten challenging questions about SARS-CoV-2 and COVID-19. *Expert Rev Respir Med* 2020 Jun 30;1-8. [doi: [10.1080/17476348.2020.1782197](https://doi.org/10.1080/17476348.2020.1782197)] [Medline: [32536226](https://pubmed.ncbi.nlm.nih.gov/32536226/)]
5. Khatami A. Filling in the gaps. *J Paediatr Child Health* 2020 Aug 29;56(8):1172-1172. [doi: [10.1111/jpc.15026](https://doi.org/10.1111/jpc.15026)] [Medline: [32596874](https://pubmed.ncbi.nlm.nih.gov/32596874/)]
6. Fidahic M, Nujic D, Runjic R, Civljak M, Markotic F, Lovric Makaric Z, et al. Research methodology and characteristics of journal articles with original data, preprint articles and registered clinical trial protocols about COVID-19. *BMC Med Res Methodol* 2020 Jun 22;20(1):161 [FREE Full text] [doi: [10.1186/s12874-020-01047-2](https://doi.org/10.1186/s12874-020-01047-2)] [Medline: [32571302](https://pubmed.ncbi.nlm.nih.gov/32571302/)]
7. Polak SB, Van Gool IC, Cohen D, von der Thüsen JH, van Paassen J. A systematic review of pathological findings in COVID-19: a pathophysiological timeline and possible mechanisms of disease progression. *Mod Pathol* 2020 Jun 22 [FREE Full text] [doi: [10.1038/s41379-020-0603-3](https://doi.org/10.1038/s41379-020-0603-3)] [Medline: [32572155](https://pubmed.ncbi.nlm.nih.gov/32572155/)]
8. Chang D, Zhao P, Zhang D, Dong J, Xu Z, Yang G, et al. Persistent Viral Presence Determines the Clinical Course of the Disease in COVID-19. *J Allergy Clin Immunol Pract* 2020 Sep;8(8):2585-2591.e1 [FREE Full text] [doi: [10.1016/j.jaip.2020.06.015](https://doi.org/10.1016/j.jaip.2020.06.015)] [Medline: [32574840](https://pubmed.ncbi.nlm.nih.gov/32574840/)]
9. Cleary S, Pitchford S, Amison R, Carrington R, Robaina CC, Magnen M. Animal models of mechanisms of SARS-CoV-2 infection and COVID-19 pathology. *Br J Pharmacol* 2020:e [FREE Full text] [doi: [10.22541/au.158861365.54417186](https://doi.org/10.22541/au.158861365.54417186)]
10. Tu H, Tu S, Gao S, Shao A, Sheng J. Current epidemiological and clinical features of COVID-19; a global perspective from China. *J Infect* 2020 Jul;81(1):1-9 [FREE Full text] [doi: [10.1016/j.jinf.2020.04.011](https://doi.org/10.1016/j.jinf.2020.04.011)] [Medline: [32315723](https://pubmed.ncbi.nlm.nih.gov/32315723/)]
11. Hassan S, Sheikh F, Jamal S, Ezeh J, Akhtar A. Coronavirus (COVID-19): A Review of Clinical Features, Diagnosis, and Treatment. *Cureus* 2020 Mar 21;12(3):e7355 [FREE Full text] [doi: [10.7759/cureus.7355](https://doi.org/10.7759/cureus.7355)] [Medline: [32328367](https://pubmed.ncbi.nlm.nih.gov/32328367/)]
12. Park J, Jang W, Kim S, Lee J, Lim Y, Cho C, et al. The Clinical Manifestations and Chest Computed Tomography Findings of Coronavirus Disease 2019 (COVID-19) Patients in China: A Proportion Meta-Analysis. *Clin Exp Otorhinolaryngol* 2020 May;13(2):95-105 [FREE Full text] [doi: [10.21053/ceo.2020.00570](https://doi.org/10.21053/ceo.2020.00570)] [Medline: [32434310](https://pubmed.ncbi.nlm.nih.gov/32434310/)]
13. Gulati A, Pomeranz C, Qamar Z, Thomas S, Frisch D, George G, et al. A Comprehensive Review of Manifestations of Novel Coronaviruses in the Context of Deadly COVID-19 Global Pandemic. *Am J Med Sci* 2020 Jul;360(1):5-34 [FREE Full text] [doi: [10.1016/j.amjms.2020.05.006](https://doi.org/10.1016/j.amjms.2020.05.006)] [Medline: [32620220](https://pubmed.ncbi.nlm.nih.gov/32620220/)]
14. Yang R, Gui X, Zhang Y, Xiong Y. The role of essential organ-based comorbidities in the prognosis of COVID-19 infection patients. *Expert Rev Respir Med* 2020 Aug 28;14(8):835-838 [FREE Full text] [doi: [10.1080/17476348.2020.1761791](https://doi.org/10.1080/17476348.2020.1761791)] [Medline: [32345072](https://pubmed.ncbi.nlm.nih.gov/32345072/)]

15. Asfahan S, Deokar K, Dutt N, Niwas R, Jain P, Agarwal M. Extrapolation of mortality in COVID-19: Exploring the role of age, sex, co-morbidities and health-care related occupation. *Monaldi Arch Chest Dis* 2020 May 21;90(2) [[FREE Full text](#)] [doi: [10.4081/monaldi.2020.1325](https://doi.org/10.4081/monaldi.2020.1325)] [Medline: [32447949](https://pubmed.ncbi.nlm.nih.gov/32447949/)]
16. Singh AK, Gillies CL, Singh R, Singh A, Chudasama Y, Coles B, et al. Prevalence of co-morbidities and their association with mortality in patients with COVID-19: A systematic review and meta-analysis. *Diabetes Obes Metab* 2020 Jun 23 [[FREE Full text](#)] [doi: [10.1111/dom.14124](https://doi.org/10.1111/dom.14124)] [Medline: [32573903](https://pubmed.ncbi.nlm.nih.gov/32573903/)]
17. Ji W, Huh K, Kang M, Hong J, Bae GH, Lee R, et al. Effect of Underlying Comorbidities on the Infection and Severity of COVID-19 in Korea: a Nationwide Case-Control Study. *J Korean Med Sci* 2020 Jun 29;35(25):e237 [[FREE Full text](#)] [doi: [10.3346/jkms.2020.35.e237](https://doi.org/10.3346/jkms.2020.35.e237)] [Medline: [32597048](https://pubmed.ncbi.nlm.nih.gov/32597048/)]
18. Ye C, Zhang S, Zhang X, Cai H, Gu J, Lian J, et al. Impact of comorbidities on patients with COVID-19: A large retrospective study in Zhejiang, China. *J Med Virol* 2020 Jun 16 [[FREE Full text](#)] [doi: [10.1002/jmv.26183](https://doi.org/10.1002/jmv.26183)] [Medline: [32543710](https://pubmed.ncbi.nlm.nih.gov/32543710/)]
19. Rabby MII. Current Drugs with Potential for Treatment of COVID-19: A Literature Review. *J Pharm Pharm Sci* 2020 Apr 04;23(1):58-64 [[FREE Full text](#)] [doi: [10.18433/jpps31002](https://doi.org/10.18433/jpps31002)] [Medline: [32251618](https://pubmed.ncbi.nlm.nih.gov/32251618/)]
20. Xu X, Ong YK, Wang DY. Role of adjunctive treatment strategies in COVID-19 and a review of international and national clinical guidelines. *Mil Med Res* 2020 May 05;7(1):22 [[FREE Full text](#)] [doi: [10.1186/s40779-020-00251-x](https://doi.org/10.1186/s40779-020-00251-x)] [Medline: [32370766](https://pubmed.ncbi.nlm.nih.gov/32370766/)]
21. Luo P, Liu Y, Qiu L, Liu X, Liu D, Li J. Tocilizumab treatment in COVID-19: A single center experience. *J Med Virol* 2020 Jul 15;92(7):814-818 [[FREE Full text](#)] [doi: [10.1002/jmv.25801](https://doi.org/10.1002/jmv.25801)] [Medline: [32253759](https://pubmed.ncbi.nlm.nih.gov/32253759/)]
22. Zumla A, Hui DS, Azhar EI, Memish ZA, Maeurer M. Reducing mortality from 2019-nCoV: host-directed therapies should be an option. *The Lancet* 2020 Feb;395(10224):e35-e36. [doi: [10.1016/s0140-6736\(20\)30305-6](https://doi.org/10.1016/s0140-6736(20)30305-6)]
23. Hung I, Lung K, Tso E, Liu R, Chung T, Chu M, et al. Triple combination of interferon beta-1b, lopinavir-ritonavir, and ribavirin in the treatment of patients admitted to hospital with COVID-19: an open-label, randomised, phase 2 trial. *The Lancet* 2020 May;395(10238):1695-1704. [doi: [10.1016/S0140-6736\(20\)31042-4](https://doi.org/10.1016/S0140-6736(20)31042-4)]
24. Venkatasubbaiah M, Dwarakanadha Reddy P, Satyanarayana SV. Literature-based review of the drugs used for the treatment of COVID-19. *Curr Med Res Pract* 2020 May;10(3):100-109 [[FREE Full text](#)] [doi: [10.1016/j.cmrp.2020.05.013](https://doi.org/10.1016/j.cmrp.2020.05.013)] [Medline: [32572376](https://pubmed.ncbi.nlm.nih.gov/32572376/)]
25. Zhang L, Liu Y. Potential interventions for novel coronavirus in China: A systematic review. *J Med Virol* 2020 May 03;92(5):479-490 [[FREE Full text](#)] [doi: [10.1002/jmv.25707](https://doi.org/10.1002/jmv.25707)] [Medline: [32052466](https://pubmed.ncbi.nlm.nih.gov/32052466/)]
26. Juul S, Nielsen N, Bentzer P, Veroniki AA, Thabane L, Linder A, et al. Interventions for treatment of COVID-19: a protocol for a living systematic review with network meta-analysis including individual patient data (The LIVING Project). *Syst Rev* 2020 May 09;9(1):108 [[FREE Full text](#)] [doi: [10.1186/s13643-020-01371-0](https://doi.org/10.1186/s13643-020-01371-0)] [Medline: [32386514](https://pubmed.ncbi.nlm.nih.gov/32386514/)]
27. Jean S, Lee P, Hsueh P. Treatment options for COVID-19: The reality and challenges. *J Microbiol Immunol Infect* 2020 Jun;53(3):436-443 [[FREE Full text](#)] [doi: [10.1016/j.jmii.2020.03.034](https://doi.org/10.1016/j.jmii.2020.03.034)] [Medline: [32307245](https://pubmed.ncbi.nlm.nih.gov/32307245/)]
28. Pastick K, Okafor E, Wang F, Lofgren S, Skipper C, Nicol M, et al. Review: Hydroxychloroquine and Chloroquine for Treatment of SARS-CoV-2 (COVID-19). *Open Forum Infect Dis* 2020 Apr;7(4):ofaa130 [[FREE Full text](#)] [doi: [10.1093/ofid/ofaa130](https://doi.org/10.1093/ofid/ofaa130)] [Medline: [32363212](https://pubmed.ncbi.nlm.nih.gov/32363212/)]
29. Saqrane S, El Mhammedi M. Review on the global epidemiological situation and the efficacy of chloroquine and hydroxychloroquine for the treatment of COVID-19. *New Microbes New Infect* 2020 May;35:100680 [[FREE Full text](#)] [doi: [10.1016/j.nmni.2020.100680](https://doi.org/10.1016/j.nmni.2020.100680)] [Medline: [32322402](https://pubmed.ncbi.nlm.nih.gov/32322402/)]
30. Sun J, Chen Y, Fan X, Wang X, Han Q, Liu Z. Advances in the use of chloroquine and hydroxychloroquine for the treatment of COVID-19. *Postgrad Med* 2020 Jun 21:1-10 [[FREE Full text](#)] [doi: [10.1080/00325481.2020.1778982](https://doi.org/10.1080/00325481.2020.1778982)] [Medline: [32496926](https://pubmed.ncbi.nlm.nih.gov/32496926/)]
31. Meo S, Klonoff D, Akram J. Efficacy of chloroquine and hydroxychloroquine in the treatment of COVID-19. *Eur Rev Med Pharmacol Sci* 2020 Apr;24(8):4539-4547 [[FREE Full text](#)] [doi: [10.26355/eurrev_202004_21038](https://doi.org/10.26355/eurrev_202004_21038)] [Medline: [32373993](https://pubmed.ncbi.nlm.nih.gov/32373993/)]
32. Al-Bari MAA. Facts and myths: Efficacies of repurposing chloroquine and hydroxychloroquine for the treatment of COVID-19. *Curr Drug Targets* 2020 Jun 17;21. [doi: [10.2174/1389450121666200617133142](https://doi.org/10.2174/1389450121666200617133142)] [Medline: [32552642](https://pubmed.ncbi.nlm.nih.gov/32552642/)]
33. Shukla AM, Archibald LK, Wagle Shukla A, Mehta HJ, Cherabuddi K. Chloroquine and hydroxychloroquine in the context of COVID-19. *Drugs Context* 2020 Apr 28;9:1-8 [[FREE Full text](#)] [doi: [10.7573/dic.2020-4-5](https://doi.org/10.7573/dic.2020-4-5)] [Medline: [32373183](https://pubmed.ncbi.nlm.nih.gov/32373183/)]
34. Sarma P, Kaur H, Kumar H, Mahendru D, Avti P, Bhattacharyya A, et al. Virological and clinical cure in COVID-19 patients treated with hydroxychloroquine: A systematic review and meta-analysis. *J Med Virol* 2020 Jul 03;92(7):776-785 [[FREE Full text](#)] [doi: [10.1002/jmv.25898](https://doi.org/10.1002/jmv.25898)] [Medline: [32297988](https://pubmed.ncbi.nlm.nih.gov/32297988/)]
35. Liu W, Zhou P, Chen K, Ye Z, Liu F, Li X, et al. Efficacy and safety of antiviral treatment for COVID-19 from evidence in studies of SARS-CoV-2 and other acute viral infections: a systematic review and meta-analysis. *CMAJ* 2020 Jul 06;192(27):E734-E744. [doi: [10.1503/cmaj.200647](https://doi.org/10.1503/cmaj.200647)] [Medline: [32493740](https://pubmed.ncbi.nlm.nih.gov/32493740/)]
36. Dos Reis Neto ET, Kakehasi AM, de Medeiros Pinheiro M, Ferreira GA, Marques CDL, da Mota LMH, et al. Revisiting hydroxychloroquine and chloroquine for patients with chronic immunity-mediated inflammatory rheumatic diseases. *Adv Rheumatol* 2020 Jun 09;60(1):32 [[FREE Full text](#)] [doi: [10.1186/s42358-020-00134-8](https://doi.org/10.1186/s42358-020-00134-8)] [Medline: [32517786](https://pubmed.ncbi.nlm.nih.gov/32517786/)]

37. Graef ER, Liew JW, Putman MS, Simard JF, Sirotich E, Berenbaum F, COVID-19 Global Rheumatology Alliance. : hydroxychloroquine, COVID-19 and the role of the rheumatologist. *Ann Rheum Dis* 2020 Jun 15;79(6):734-736 [FREE Full text] [doi: [10.1136/annrheumdis-2020-217480](https://doi.org/10.1136/annrheumdis-2020-217480)] [Medline: [32295786](https://pubmed.ncbi.nlm.nih.gov/32295786/)]
38. Misra DP, Agarwal V, Gasparyan AY, Zimba O. Rheumatologists' perspective on coronavirus disease 19 (COVID-19) and potential therapeutic targets. *Clin Rheumatol* 2020 Jul 10;39(7):2055-2062 [FREE Full text] [doi: [10.1007/s10067-020-05073-9](https://doi.org/10.1007/s10067-020-05073-9)] [Medline: [32277367](https://pubmed.ncbi.nlm.nih.gov/32277367/)]
39. Felten R, Chatelus E, Arnaud L. How and why are rheumatologists relevant to COVID-19? *Joint Bone Spine* 2020 Jul;87(4):279-280 [FREE Full text] [doi: [10.1016/j.jbspin.2020.04.006](https://doi.org/10.1016/j.jbspin.2020.04.006)] [Medline: [32451147](https://pubmed.ncbi.nlm.nih.gov/32451147/)]
40. Coronavirus disease 2019 (COVID-19) — Situation Report – 51. World Health Organization. 2020. URL: https://www.who.int/docs/default-source/coronaviruse/situation-reports/20200311-sitrep-51-covid-19.pdf?sfvrsn=1ba62e57_10 [accessed 2020-06-01]
41. Candido DS, Claro IM, de Jesus JG, Souza WM, Moreira FRR, Dellicour S, Brazil-UK Centre for Arbovirus Discovery, Diagnosis, GenomicsEpidemiology (CADDE) Genomic Network, et al. Evolution and epidemic spread of SARS-CoV-2 in Brazil. *Science* 2020 Sep 04;369(6508):1255-1260 [FREE Full text] [doi: [10.1126/science.abd2161](https://doi.org/10.1126/science.abd2161)] [Medline: [32703910](https://pubmed.ncbi.nlm.nih.gov/32703910/)]
42. Michaud K, Wipfler K, Shaw Y, Simon TA, Cornish A, England BR, et al. Experiences of Patients With Rheumatic Diseases in the United States During Early Days of the COVID-19 Pandemic. *ACR Open Rheumatol* 2020 Jun 09;2(6):335-343 [FREE Full text] [doi: [10.1002/acr.2.11148](https://doi.org/10.1002/acr.2.11148)] [Medline: [32311836](https://pubmed.ncbi.nlm.nih.gov/32311836/)]
43. Aletaha D, Neogi T, Silman AJ, Funovits J, Felson DT, Bingham CO, et al. 2010 Rheumatoid arthritis classification criteria: an American College of Rheumatology/European League Against Rheumatism collaborative initiative. *Arthritis Rheum* 2010 Sep 10;62(9):2569-2581 [FREE Full text] [doi: [10.1002/art.27584](https://doi.org/10.1002/art.27584)] [Medline: [20872595](https://pubmed.ncbi.nlm.nih.gov/20872595/)]
44. Aringer M, Costenbader KH, Daikh D, Brinks R, Mosca M, Ramsey-Goldman R, et al. 2019 European League Against Rheumatism/American College of Rheumatology Classification Criteria for Systemic Lupus Erythematosus. *Arthritis Rheumatol* 2019 Sep 04;71(9):1400-1412 [FREE Full text] [doi: [10.1002/art.40930](https://doi.org/10.1002/art.40930)] [Medline: [31385462](https://pubmed.ncbi.nlm.nih.gov/31385462/)]
45. Shiboski CH, Shiboski SC, Seror R, Criswell LA, Labetoulle M, Lietman TM, International Sjögren's Syndrome Criteria Working Group. 2016 American College of Rheumatology/European League Against Rheumatism classification criteria for primary Sjögren's syndrome: A consensus and data-driven methodology involving three international patient cohorts. *Ann Rheum Dis* 2017 Jan 26;76(1):9-16. [doi: [10.1136/annrheumdis-2016-210571](https://doi.org/10.1136/annrheumdis-2016-210571)] [Medline: [27789466](https://pubmed.ncbi.nlm.nih.gov/27789466/)]
46. van den Hoogen F, Khanna D, Franssen J, Johnson S, Baron M, Tyndall A, et al. 2013 classification criteria for systemic sclerosis: an American College of Rheumatology/European League against Rheumatism collaborative initiative. *Arthritis Rheum* 2013 Nov;65(11):2737-2747 [FREE Full text] [doi: [10.1002/art.38098](https://doi.org/10.1002/art.38098)] [Medline: [24122180](https://pubmed.ncbi.nlm.nih.gov/24122180/)]
47. Lundberg IE, Tjärnlund A, Bottai M, Werth VP, Pilkington C, de Visser M, International Myositis Classification Criteria Project Consortium, the Euromyositis Register, the Juvenile Dermatomyositis Cohort Biomarker StudyRepository (UKIreland). 2017 European League Against Rheumatism/American College of Rheumatology Classification Criteria for Adult and Juvenile Idiopathic Inflammatory Myopathies and Their Major Subgroups. *Arthritis Rheumatol* 2017 Dec 10;69(12):2271-2282 [FREE Full text] [doi: [10.1002/art.40320](https://doi.org/10.1002/art.40320)] [Medline: [29106061](https://pubmed.ncbi.nlm.nih.gov/29106061/)]
48. Kasukawa R. Mixed connective tissue disease. *Intern Med* 1999 May;38(5):386-393 [FREE Full text] [doi: [10.2169/internalmedicine.38.386](https://doi.org/10.2169/internalmedicine.38.386)] [Medline: [10397074](https://pubmed.ncbi.nlm.nih.gov/10397074/)]
49. Altman R, Alarcón G, Appelrouth D, Bloch D, Borenstein D, Brandt K, et al. The American College of Rheumatology criteria for the classification and reporting of osteoarthritis of the hand. *Arthritis Rheum* 1990 Nov;33(11):1601-1610. [doi: [10.1002/art.1780331101](https://doi.org/10.1002/art.1780331101)] [Medline: [2242058](https://pubmed.ncbi.nlm.nih.gov/2242058/)]
50. Ministry of Health (BR), Health Surveillance Secretariat, Public Health Emergency Operations Center. Coronavirus disease 2019: expansion of surveillance, non-pharmacological measures and decentralization of laboratory diagnosis. 2020 Mar. URL: http://maismedicos.gov.br/images/PDF/2020_03_13_Boletim-Epidemiologico-05.pdf [accessed 2020-06-01]
51. Especial COVID-19: Dados Por Município. Brasil.io. 2020. URL: <https://brasil.io/home/> [accessed 2020-06-01]

Abbreviations

- ANOVA:** analysis of variance
- CONEP:** Brazilian National Ethics Committee
- IL-6:** interleukin 6
- IMRD:** immune-mediated rheumatic diseases
- MERS-CoV:** Middle East respiratory syndrome coronavirus
- PCR:** polymerase chain reaction
- RNA:** ribonucleic acid
- SARS-CoV:** severe acute respiratory syndrome-associated coronavirus
- V:** visit

Edited by G Eysenbach; submitted 14.08.20; peer-reviewed by F Lem, J Zhang; comments to author 04.09.20; revised version received 07.09.20; accepted 08.09.20; published 14.10.20

Please cite as:

Gomides A, Ferreira G, Kakehasi A, Lacerda M, Marques C, Mota L, Paiva E, Pileggi G, Provenza J, Reis-Neto E, Sampaio V, Xavier R, Pinheiro M

Impact of Chronic Use of Antimalarials on SARS-CoV-2 Infection in Patients With Immune-Mediated Rheumatic Diseases: Protocol for a Multicentric Observational Cohort Study

JMIR Res Protoc 2020;9(10):e23532

URL: <http://www.researchprotocols.org/2020/10/e23532/>

doi: [10.2196/23532](https://doi.org/10.2196/23532)

PMID: [32924956](https://pubmed.ncbi.nlm.nih.gov/32924956/)

©Ana Gomides, Gilda Ferreira, Adriana Kakehasi, Marcus Lacerda, Cláudia Marques, Licia Mota, Eduardo Paiva, Gecilmara Pileggi, José Provenza, Edgard Reis-Neto, Vanderson Sampaio, Ricardo Xavier, Marcelo Pinheiro. Originally published in JMIR Research Protocols (<http://www.researchprotocols.org>), 14.10.2020. This is an open-access article distributed under the terms of the Creative Commons Attribution License (<https://creativecommons.org/licenses/by/4.0/>), which permits unrestricted use, distribution, and reproduction in any medium, provided the original work, first published in JMIR Research Protocols, is properly cited. The complete bibliographic information, a link to the original publication on <http://www.researchprotocols.org>, as well as this copyright and license information must be included.